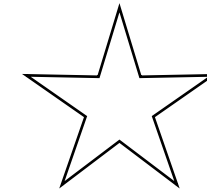
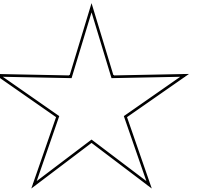


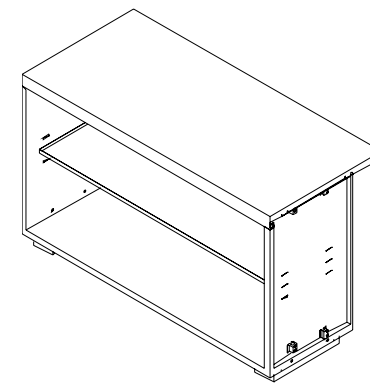
# STORAGE CABINET INSTALLATIONS MANUAL



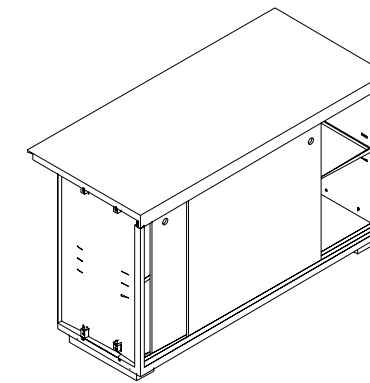
## *Model-Laminate Top*



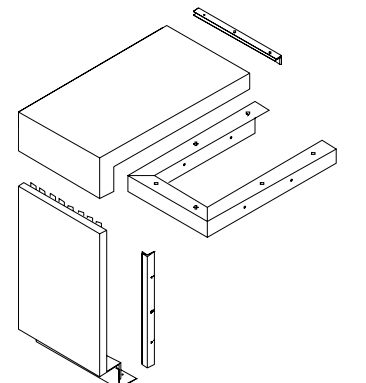
**Durable – Interchangeable  
Easy to Install**



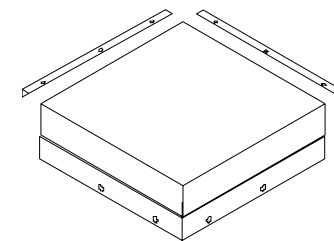
Cabinet - no doors  
Laminate Top



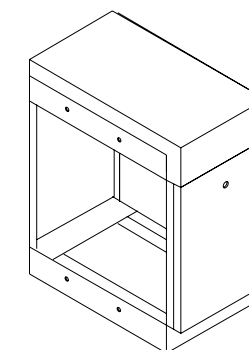
Cabinet - with doors  
Laminate Tops



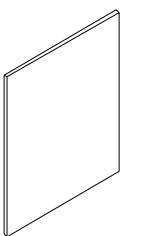
Filler Panel  
Laminate Top



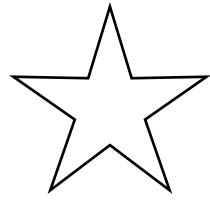
Corner Section  
Laminate Top



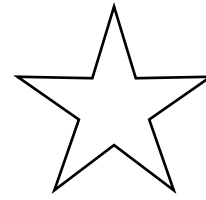
Utility Compartment



End Panel



# Before you Unpack this Equipment



- Check ALL cartons for possible freight damages. If damaged, do not continue to open. Report all damages to the freight carrier and your sales representative.
- Count to make sure the number of boxes matches the packing slip. If they do not, check your Bill of Lading to make sure you received all your equipment.

## General Information

*HVAC CUSTOM ENCLOSURE CO., LLC* provides the industry with high quality cabinetry that is easy to install. Read your instruction manual prior to installing your equipment. Familiarize yourself with the layout of the room, size and arrangement of the cabinets. This manual will provide you with information to properly install this equipment. Cabinets come with tops pre-assembled. Cabinets are available in two, three, four and five foot lengths. Each standard cabinet comes with one adjustable shelf, front and side floor skirts, back wall brace, back F-channel and hardware pack. Fasteners required to secure equipment to floors and walls ARE SUPPLIED BY OTHERS.

### Before Installing:

You will need the following tools.

(Additional tools may be needed for fastening to the wall and floor)

Adjustable Drill  
Long Phillips Head Bit to fit in Drill (Magnetic Bit Recommended)  
Tape Measure  
Contractor Level  
Marking Device

### Steel Tops

Metal cutting equipment (Used for Field Cutting Filler Panels to Length)

**or**

### Laminate Tops

Metal cutting equipment (Used for Field Cutting Front Steel Filler Panels to Length)

**and**

Laminate cutting equipment (Used for Field Cutting Filler Panels to Length)

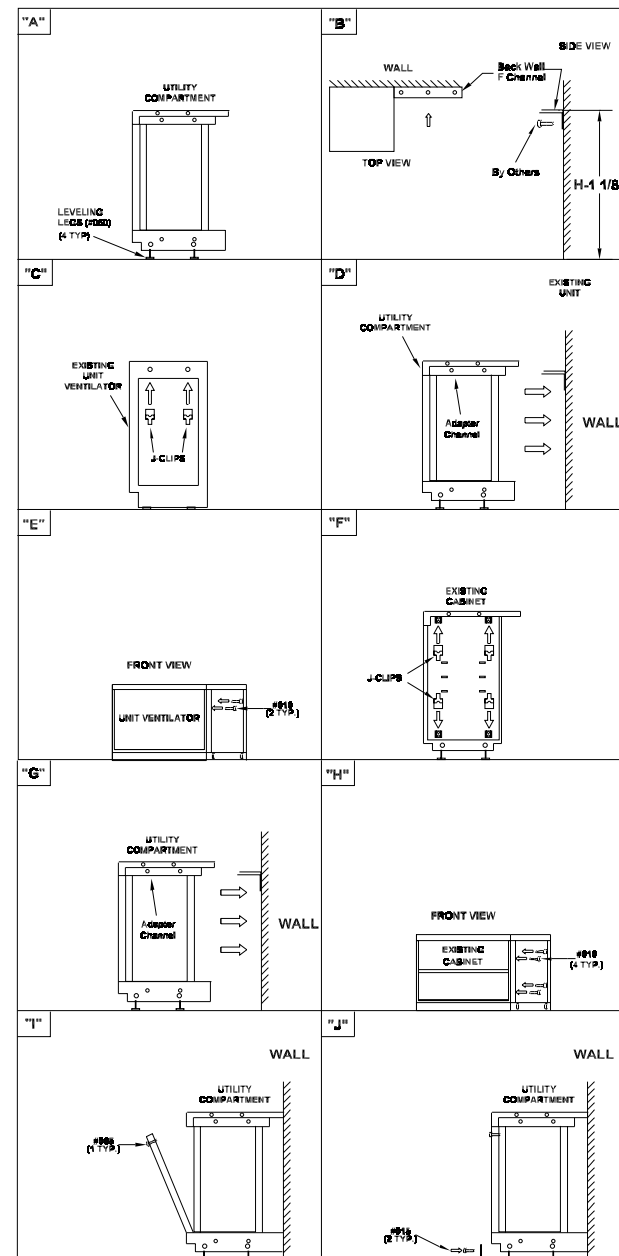
# Laminate Top Utility Compartment

# Table of Contents

**NOTE:** Utility Compartment must have End Panels or fasten to other equipment.

Utility Compartment comes pre-assembled with hardware pak and Back F-Channel.

- Unpack Utility Compartment. Be careful when using sharp objects not to damage the finish.
- **(A)** Install (4) #060 Leveling Legs.
- **(B)** Strike a line 1 1/8" below existing Equipment and install F-Channel to the wall. Make sure the F-Channel is level to existing equipment. If installing against existing cabinet, install F-Channel flush with cabinet F-Channel. Use Leveling Legs for final adjustment.
- **(C) Utility Compartment to Unit Ventilator:** Insert (2) #035 J-Clips onto unit ventilator side frame.
- **(D)** Slide Utility Compartment onto F-Channel.
- **(E)** Insert (2) #045 screws through adapter channel into unit ventilator clips. Make sure top is level and flush on all sides before tightening. Adjust back F-Channel if need to level to existing equipment. Go on to Step (I).
- **(F) Utility Compartment to Existing Cabinet:** Insert (4) #035 Clips into the side of the existing cabinet in (4) places.
- **(G)** Slide Utility Compartment onto F-Channel.
- **(H)** Insert (4) #045 screws through steel top into unit existing cabinet clips. Make sure top is level and flush on all sides before tightening. Adjust back F-Channel if need to level to existing equipment. Go on to Step (I).
- **(I)** Prior to installing front panel, make sure all equipment on either side is installed. When both sides of utility compartment equipment are installed, install front panel by inserting locator pins into bottom base rail. Push front panel into top and fasten using (1) #065 fastener.
- **(J)** Install front skirt using (2) #010 fasteners. Install side skirts if needed.



**\*\*NOTE:** Do not use hardware to pull cabinet together

- General Information
- Cabinet Hardware Packs
- Cabinet to Unit Ventilator Installation
- Cabinet-to-Cabinet Installation
- Cabinet to Filler Panel Installation
- End Panel Installation
- Cabinet to Corner Installation
- Utility Compartment Installation

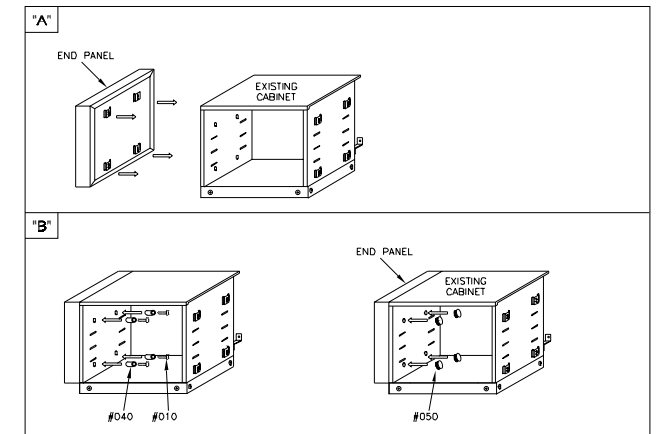
# CABINET HARDWARE – Laminate Top

# Laminate Top Cabinet to End Panel

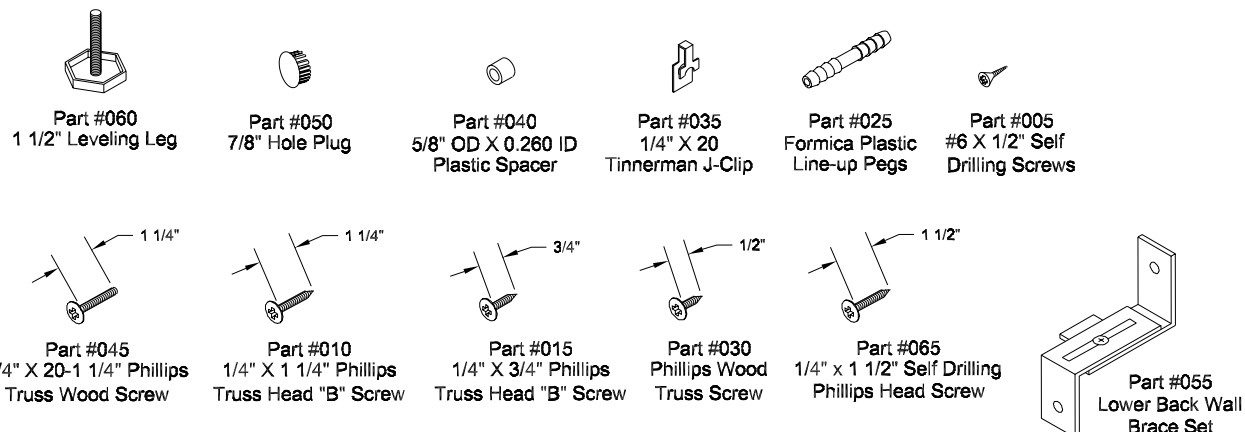
Hardware for Cabinets with Laminate Tops			PAK#2
Qty	Part#	Description	Used For
8	035	1/4 x 20 Tinnerman U-Clips	Secure Unit Vent., Cabinet to Cabinet
2	025	Laminate Plastic Line Up Pegs (Factory Supplied Laminate Only)	Line Up Laminate Ends
8	040	5/8" OD x .260" ID Plastic Spacers	Secure Unit Vent., Cabinet to Cabinet
8	045	1/4 x 20 - 1 1/4" Phillips Truss Head Screws MS	Secure Unit Vent., Cabinet to Cabinet
8	050	7/8" Hole Plugs	Plug Hole for Internal Side
1	055	Lower Back Wall Brace Set	Secure Base to Wall
4	060	1 1/2" Leg Leveler	Leg Support
5	030	1/2" Phillips Truss Wood Screws (Factory Supplied Laminate Only)	Secure Laminate Top to Cabinet Base
6	015	1/4 x 3/4" Phillips Truss Head "B" Screws	Secure Front and Side Skirt to Leg Base
Hardware for Filler Sections with Laminate Tops			PAK#2A
Qty	Part#	Description	Used For
3	005	Self Drilling TEK #6 Counter Sink Screws	Secure Top/Side/Front to F-Channel
9	030	1/2" Phillips Truss Wood Screws (Factory Supplied Laminate Only)	Secure Laminate Top to Steel Adapter Channel
2	025	Laminate Plastic Line Up Pegs (Factory Supplied Laminate Only)	Line Up Laminate Ends
4	010	1/4 x 1-1/4" Phillips Truss Head "B" Screws	Secure Cabinet to Top Filler Channel
3	015	1/4 x 3/4" Phillips Truss Head "B" Screws	Secure Front Panel to Floor Angle
Hardware for Inside Corners with Laminate Tops			PAK#2B
Qty	Part#	Description	Used For
8	030	1/2" Phillips Truss Wood Screws (Factory Supplied Laminate Only)	Secure Laminate Top to Steel Adapter Channel
4	025	Laminate Plastic Line Up Pegs (Factory Supplied Laminate Only)	Line Up Laminate Ends
4	010	1/4 x 1-1/4" Phillips Truss Head "B" Screws	Secure Cabinet to Top Corner Section
Hardware for End Panels			PAK#2C
Qty	Part#	Description	Used For
4	010	1/4 x 1-1/4" Phillips Truss Head "B" Screws	Secure Cabinet to End Panel
4	040	5/8" OD x .260" ID Plastic Spacers	Secure Cabinet to End Panel
Hardware for Utility Compartment with Laminate Tops			PAK#2D
Qty	Part#	Description	Used For
4	040	5/8" OD x .260" ID Plastic Spacers	Secure Utility to Cabinet/U.V.
8	010	1/4 x 1-1/4" Phillips Truss Head "B" Screws	Secure Utility End Panel/Filler Section
8	045	1/4 x 20 - 1 1/4" Phillips Truss Head Screws MS	Secure Utility to Cabinet/U.V
4	060	1 1/2" Leg Leveler	Leg Support
1	065	1/4 x 20 - 3/4" Hex Truss Head Screws MS	Secure Front Panel in Place
6	015	1/4 x 3/4" Phillips Truss Head "B" Screws	Secure Front and Side Skirts to Leg Base

**NOTE:** End panel must be installed prior to field supplied laminate top.

- Unpack End Panel. Be careful when using sharp objects not to damage the finish.
- Remove all parts and protective shipping wrapper. You may want to keep protective wrapper to use over equipment to protect finished installation.
- (A) Line up end panel to side of cabinet.
- (B) Insert (4) #010 screws and (4) #040 spacers through the hole on the inside of the cabinet side. Fasten screws into end panel holes. Make sure end panel is flush with all sides of the cabinet and tighten.
- Insert (4) #050 Painted Hole plugs through internal side cabinet (Supplied in cabinet hardware).



**\*\*NOTE:** Do not use hardware to pull existing cabinet together



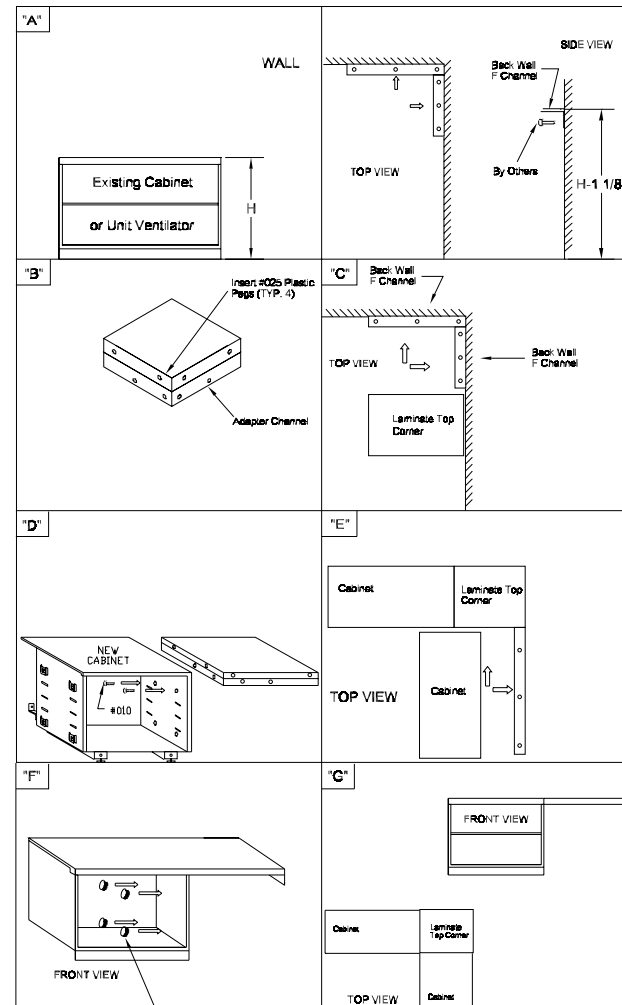
## Laminate Cabinet to Laminate Top Corner

**Note:** Prior to installing, review room layout. For best installation, install corner prior to installing cabinets or accessories. Each corner side is design to be installed against cabinets. Corner can be installed against filler sections. Corner cannot be cut or modified.

- Unpack Laminate Top Corner. Be careful when using sharp edges not to damage the finish.
- Remove all parts and protective shipping wrapper. You may want to keep protective wrapper to use over equipment to protect finished installation.
- **(A)** Measure the height of the existing cabinet from the floor to the finished front top. Strike a line 1 1/8" below existing cabinet and install (2) Back Wall F-Channel to the wall. Make sure the F-Channel is level to existing cabinet F-Channel.
- **(B)** Install (4) #025 plastic pegs in side of Laminate Top.
- **(C)** Position laminate top corner on top of F-Channel. Make sure the Corner top panel is level and flush.
- **(D)** Slide cabinet against laminate top corner making sure plastic pegs are fully inserted in the side of the new cabinet laminate top and concealed. Make sure the Corner top panel is level and flush with the top of the cabinet. Adjust leveling leg of the new cabinet to insure holes in the laminate top corner adapter channel line up with the holes in the side of the cabinet. Insert (2) #010 fasteners through the inside top holes of the cabinet side into the side of the adapter channel of the laminate top corner.
- **(E)** After one side of the cabinet is level and tightened, proceed to install the cabinet to the opposite side. Follow (D). The front corner of both cabinets must join together. If not, check to make sure cabinets are level.
- **(F)** Insert (8) #050 Painted Hole plugs through internal side cabinet (Supplied in cabinet hardware).
- **(G) Field Installed Laminate Top (By Others)**

Follow same procedure as above. If laminate top spans across Cabinet and corner section, be sure to add adapter channel to corner section of laminate. This will support both cabinets together properly. Back F-Channel and adaptor channel must be installed properly prior to fastening laminate top to cabinet.

**\*\*NOTE:** Do not use hardware to pull existing cabinet and new corner section together



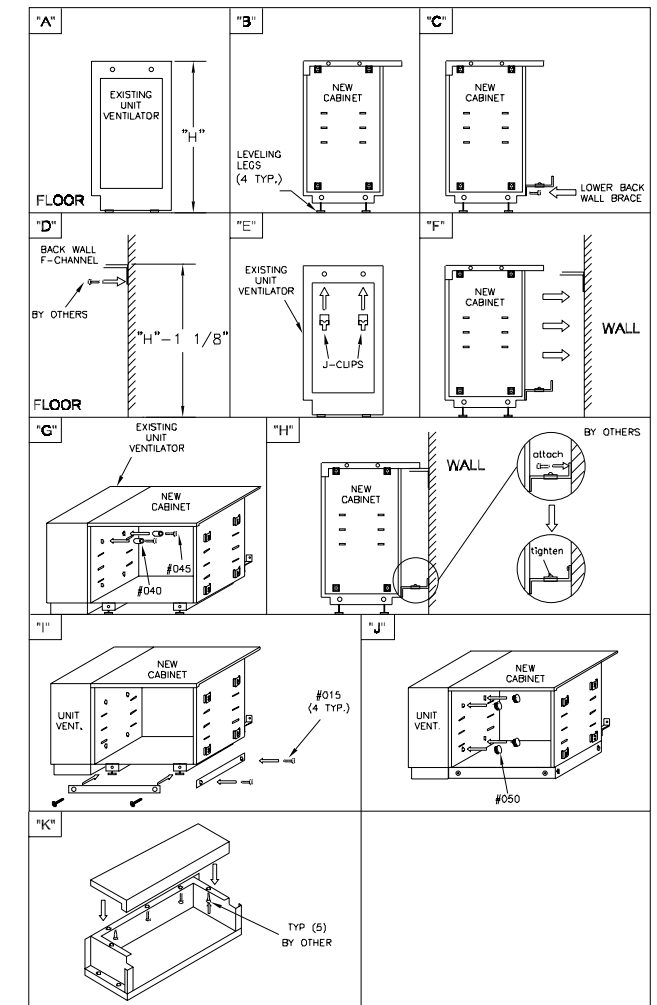
## Unit Ventilator to Laminate Top Cabinet

**Note:** Laminate Top Pre-Assembled at Factory

- Unpack Cabinet. Be careful when using sharp objects not to damage finish.
- Remove all parts and protective shipping wrapper. You may want to keep protective wrapper to use over equipment to protect finished installation.
- **(A)** Measure the height of the unit ventilator from the floor to the finished top.
- **(B)** Install (4) #060 Leveling Legs to the bottom base of the cabinet. Adjust leveling legs on the cabinet to match unit ventilator height.
- **(C)** Install (1) #055 Lower Back Wall Brace to the rear lower back of the cabinet opposite unit ventilator.
- **(D)** Strike a line 1 1/8" below Unit Ventilator and install F-Channel level and to the wall.
- **(E)** Install (2) #035 J-Clips to the top side mounting angle on the unit ventilator.
- **(F)** Slide the cabinet back above the F-Channel until the front of the cabinet is flush with the unit ventilator. Use leveling legs to level top and front of cabinet with unit ventilator if needed. Top, Front and Side of cabinet must be flush with unit ventilator prior to fastening.
- **(G)** Using (2) #040 plastic spacers, (2) #045 truss head machine screw, insert screw through spacer hole through cabinet top side panel. Join screw with #035 J-Clip on unit ventilator and tighten. Make sure unit is flush on the top and front before tightening.
- **(H)** Fasten #055 lower back brace assembly to the wall. Adjust unit brace for correct depth and tighten
- **(I)** Install front skirt using (2) #065 truss head "Type B" screws to bottom base. Adjust height to hide floor levelers. Install side skirts (optional) using (2) #065 truss head "Type B" screws to bottom base
- **(J)** Insert (4) #050 Painted Hole plugs.
- **(K) Field Installed Laminate Top (By Others)**

Follow same procedure as above. If laminate top spans across more than one unit, be sure to level cabinets to unit ventilator first. Back F-Channel must be installed prior to fastening laminate to cabinet top. Using (5) fasteners (by others) install through cabinet top flange into laminate top.

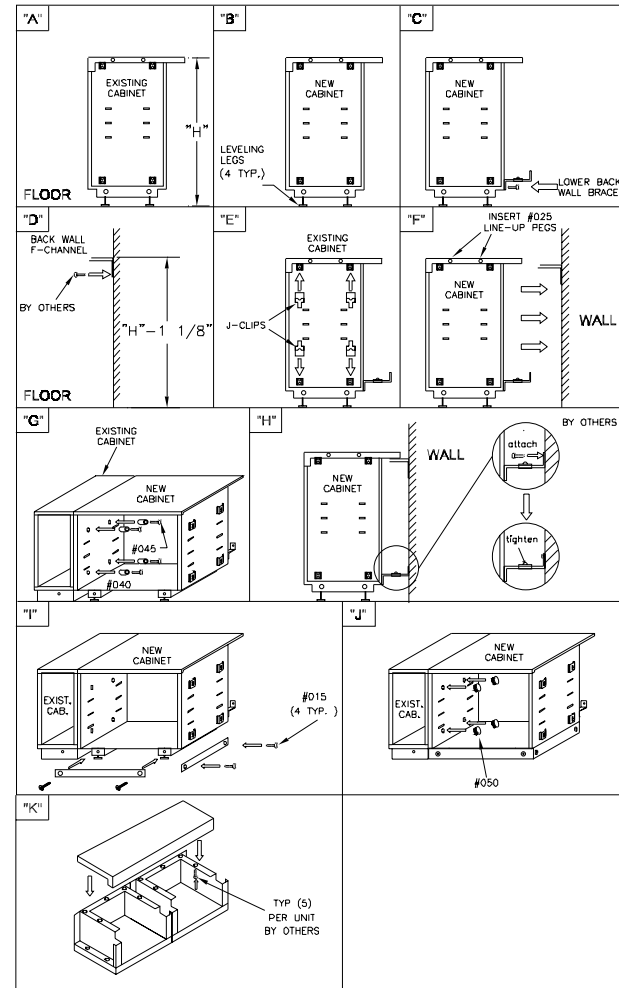
**\*\*NOTE:** Do not use hardware to pull cabinet and unit ventilator together



# Laminate Top Cabinet to Laminate Top Cabinet

## Note: Laminate Top Pre-Assemble at Factory

- Unpack Cabinet. Be careful when using sharp objects not to damage finish.
- Remove all parts and protective shipping wrapper. You may want to keep protective wrapper to use over equipment to protect finished installation.
- (A) Measure the height of the existing cabinet from the floor to the finished top.
- (B) Install (4) #060 Leveling Legs to the bottom base of the new cabinet. Adjust leveling legs on the cabinet to match existing cabinet height.
- (C) Install (1) #055 Lower Back Wall Brace to the rear lower back of the cabinet opposite existing cabinet.
- (D) Strike a line 1 1/8" below existing cabinet and install F-Channel level and to the wall.
- (E) Install (4) #035 J-Clips to the external side of the existing cabinet.
- (F) Insert (2) #025 plastic pegs into the side of the laminate top. Slide the cabinet back onto the F-Channel until the front of the cabinet is flush with the existing cabinet. Line up plastic pegs with the existing cabinet's laminate top and push cabinets together until there is no gap. Use leveling legs to level top and front of cabinet to existing cabinet if needed. Top, Front and Side of cabinet must be flush with existing Top, Front and Side of new cabinet prior to fastening.
- (G) Using (4) #040 plastic spacers, (4) #045 truss head machine screws, insert screw through spacer and hole in cabinet topside panel. Join screw with (4) #035 J-Clips on external side of existing cabinet and tighten. Make sure cabinets are flush on the Top, Front and Side before tightening.
- (H) Fasten #055 lower back brace assembly to the wall. Adjust unit depth and tighten
- (I) Install front skirt using (2) #065 truss head "Type B" screws to bottom base. Adjust height to hide floor levelers. Install side skirts (optional) using (2) #065 truss head "Type B" screws to bottom base
- (J) Insert (4) #050 Painted Hole plugs.
- (K) **Field Installed Laminate Top (By Others)**  
Follow same procedure as above. If laminate top spans across more than one unit, be sure to level cabinets to existing cabinet first. Back F-Channel must be installed level and to the wall prior to fastening laminate top to cabinet. Using (5) fasteners (by others) install through cabinet top flange into laminate top.



# Laminate Top Cabinet to Laminate Top Filler Section to Wall

Included with Laminate Top filler sections: 1-Back Wall F-Channel, 1-Set of side top wall adapter angles, 1-Set of side wall angles, 1-Laminate Top, 1-Front Panel, 1-Floor angle and 1-Adapter Channel.

- Unpack Filler Section. Be careful when using sharp objects not to damage the finish.
- Remove all parts and protective shipping wrapper. You may want to keep protective wrapper to use over equipment to protect finished installation.
- (A) Determine the distance between the end of the cabinet to the wall (A-Dimension). Measure the height of the existing cabinet from the floor to the finished top of existing cabinet (A1-Dimension). If filler section needs to be cut to size, follow step (B). If not, continue on to step (C).
- (B) Cut Back Wall F-Channel, Laminate Top and the Adapter Channel to A-Dimension. This is the distance between the end of the cabinet and the wall. When cutting the adapter channel, be sure to cut the side that will be facing the wall. Cut Front Panel and Floor angle 1/4" less than the A-Dimension. Use proper cutting equipment to insure laminate from chipping.
- (C) Strike a line 1 1/8" below the top of the existing cabinet and install F-Channel level and flush to the wall. Make sure the F-Channel is level and flush to existing cabinet (fastener by others).
- (D) Using (6) #030 1/2" wood screws, secure adapter channel and side wall adapter angle (Right side shown) to the laminate top. Install (2) #025 plastic pegs in side hole of Laminate Top facing cabinet.
- (E) Insert laminate top with plastic pegs into existing cabinet laminate top. Line up the mounting holes on the laminate adaptor channel against the holes in the cabinet side panel. Install laminate top on back F-Channel and flush against cabinet top. If not flush and level adjust F-Channel until top is flush and level.
- (F) Line up the holes in the existing cabinet with the holes in the adaptor panel. Insert (2) #010 fasteners through the side top holes of the existing cabinet into the side of the adapter channel laminate top and tighten. Make sure the side top panel is flush and level and insert (2) fasteners through side wall adapter angle into the wall (Fasteners by others). Level prior to tightening all fasteners.
- (G) Align floor angle to existing cabinet front skirt. Fasten to floor through holes in bottom side of angle (Fasteners by other).
- (H) Slide (1) sidewall trim angle over the cut front panel.
- (I) With the sidewall trim angle in place, insert the bottom of the steel front panel behind the floor angle.
- (J) Line up front steel panel with top steel panel slots in the adapter channel. Using (3) #015 fasteners, lift up front panel into top panel adaptor channel and fasten front panel into place at the floor angle.
- (K) Slide front side trim angle tight against wall and insert (3) #050 Tek screws through countersunk holes provided in side trim angle.
- Insert (4) #050 Hole plugs through internal side cabinet (Supplied in existing cabinet hardware).
- (L) **Field Installed Laminate Top (By Others)**

When continuous laminate top across Cabinet and Filler section, be sure to add adapter channel to filler section laminate top. Follow the same procedure above to cut the adapter channel, front panel, back F-Channel and floor angle. Install the adapter channel and sidewall adapter angle to continuous laminate top. This will support filler section properly. Install Back F-Channel prior to installing front panel.

\*\*NOTE: Do not use hardware to pull existing cabinet and new filler section together.

